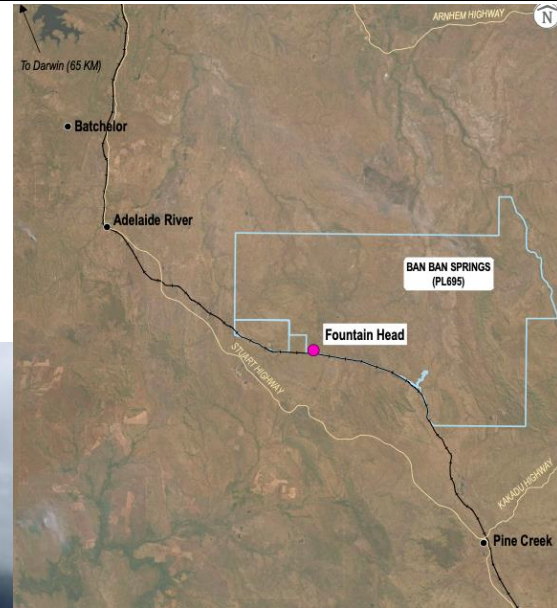


Fountain Head Gold Mine Project



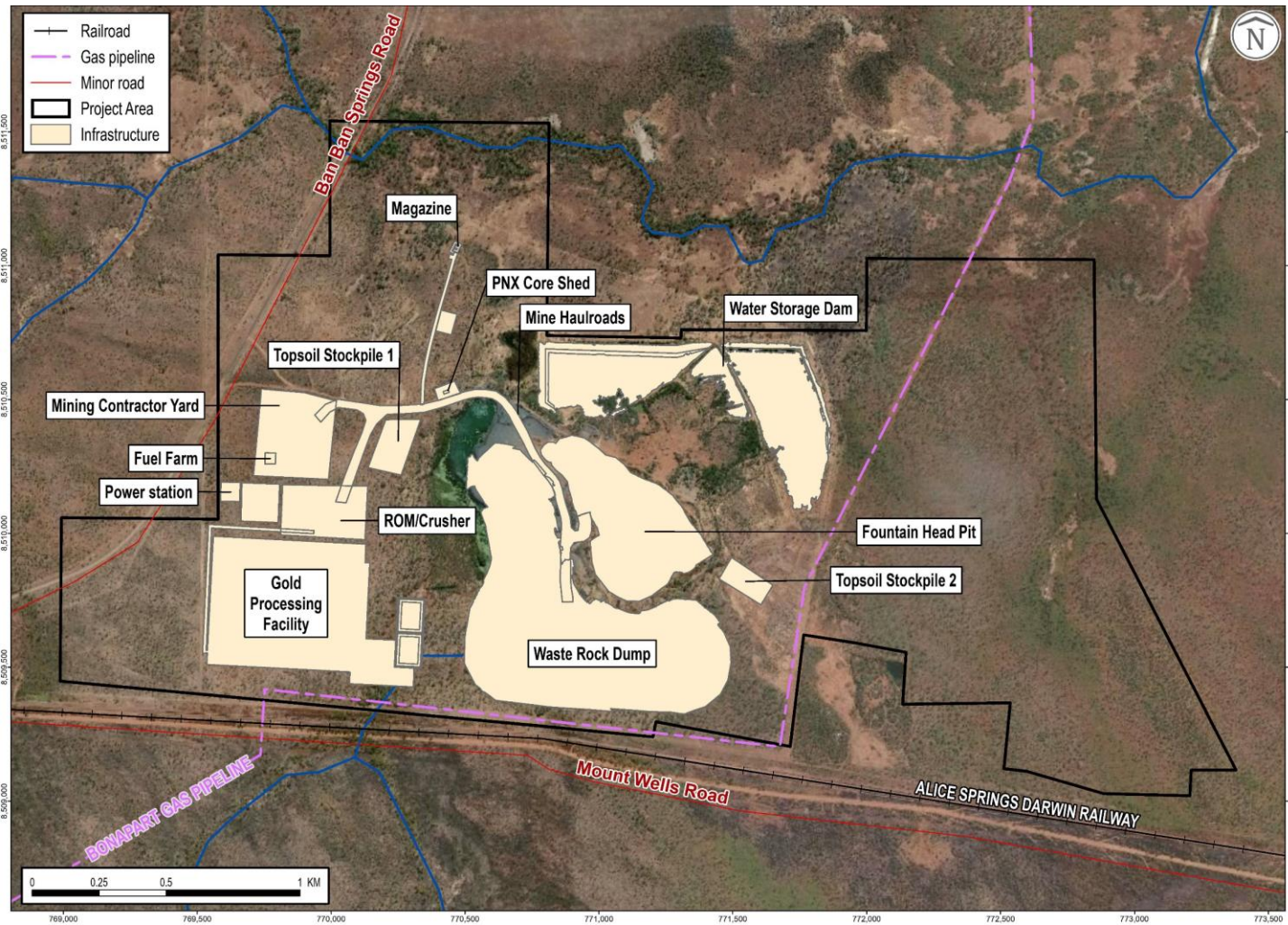
PNX Metals (PNX) Limited is proposing to recommence mining at Fountain Head, which is located between the towns of Pine Creek and Adelaide River, on a granted Mining Lease located within Ban Ban Springs Station in the Northern Territory. The recommencement of mining would incorporate dewatering, and expansion of the existing open pit and waste rock storage, construction of a gold processing facility and supporting infrastructure (e.g., workshops, roads, offices, reagent and fuel storage etc). If approved, mining would recommence in early 2021.

PNX is preparing an Environmental Impact Statement (EIS). The EIS will enable the Environmental Protection Authority (EPA) to assess the potential impacts and benefits associated with the proposal, and to determine whether it can proceed.

Contact the PNX Project Team
Level 1, 135 Fullarton Road
Rose Park, South Australia, 5067

Ph: +61 8 8364 3188
Email: info@pnxmetals.com.au
Website: pnxmetals.com.au

What is proposed?



If approved, the Project would be conducted in 3 stages, beginning in 2nd half of 2020.

Stage 1 – Dewatering of the Open Pit (mid to late 2020)

- Dewatering of the existing open pit using evaporators
- Remediation and extension of the existing water storage dam

Stage 2 – Construction, Mining and Processing (~mid 2021)

- Construction of a processing plant and associated infrastructure
- Construction of supporting infrastructure i.e. workshops, power station, roads, offices, fuel and reagent storage

- Expansion and mining of the existing open pit and expansion of the existing waste rock storage
- Continued dewatering of the pit and water storage dam
- Production of gold
- **Stage 3 – Pit Closure and Rehabilitation (~end of 2023)**
- Progressive rehabilitation of the waste rock dump
- Infrastructure will be removed, and disturbed areas rehabilitated once operations are complete

What could change?

PNX has engaged specialist consultants to conduct studies on cultural heritage, traffic, noise and vibration, air quality, groundwater, hydrology, geochemistry, aquatic ecology, and native fauna and flora.

These studies are informing the management measures that will be used to avoid or minimise any negative impacts from the proposal, and maximise the benefits.

What are the potential benefits of the Project?

The Project will create over 100 direct and indirect jobs and will procure goods and services from local and NT businesses. PNX has a policy to source workers from local communities wherever possible. The Project will also result in areas disturbed by previous owners being rehabilitated by PNX.

Will the Project impact local water sources?

Water for the Project will mostly come from the open pit, and the Project has been designed to separate mine impact water with natural surface water to protect the Margaret River and local streams. A detailed surface water management plan is being developed which will include a regular monitoring program.

What about noise or vibration?

PNX is working with industry to manage any potential effects of blasting on the nearby gas pipeline and railway. The closest receptor to the mine is approximately 5.5 km away, and noise monitoring shows that even under all proposed operating scenarios the EPA's noise criteria will be met.

Are there any cultural heritage sites that will be affected?

Surveys have identified several Aboriginal places and objects on the property. Sites of significance will be protected in accordance with the *Heritage Act 2011*. Any identified artifacts that may be impacted by the Project will be recovered prior to disturbance in consultation with Traditional Owners.

Will there be any changes to traffic or roads?

The Project will utilise the Stuart Highway, Fountain Head Road and Ban Ban Springs Road. The increase in traffic as a result of the Project is expected to be negligible. A traffic study has been conducted and a traffic management plan developed to manage Project traffic and ensure road user safety.



Have your say

Stakeholder consultation is an important part of the environmental and social impact assessment process. Consultation with stakeholders, including government authorities, businesses and landowners, commenced in June 2019, and feedback has already been built into the Project design.

Due to Covid-19, the community meetings and workshops planned to talk to the community about the proposal have had to be cancelled. However, there are still lots of opportunities to have your say about the proposal.

This flyer is one way we are reaching out to community about our proposal.

The regulatory process includes formal opportunities for public comment.

Recently, the draft terms of reference for the EIS were exhibited for public comment. Once the draft EIS is submitted to the EPA, it will be made available for community members to provide comment on the EPA website and in hard copy at selected locations. The EPA will consider community submissions in their response to the draft EIS.

If the Project is approved to commence, consultation with local communities will continue and be focused on employment and procurement opportunities and the timing of Project activities that may affect road or railway users.

Draft EIS Development (May – June 2020)	Draft EIS Assessment (July – September 2020)	If the Project is Approved
<ul style="list-style-type: none">• Conduct Project briefings/meetings with government authorities and business• Distribute Project flyer to community members• Community members encouraged to contact PNX with questions or concerns• Respond to community concerns and incorporate feedback into Project design	<ul style="list-style-type: none">• Public exhibition of EIS (hard copy and on the EPA website)• EPA will review public submissions and draft a response	<ul style="list-style-type: none">• Regular updates provided on PNX website• Community notices or meetings as required

Interested community members are encouraged to direct any questions about the recommencement of mining at Fountain Head to the contact details below.

Contact the PNX Project Team
Level 1, 135 Fullarton Road
Rose Park, South Australia, 5067

Ph: +61 8 8364 3188
Email: info@pnxmetals.com.au
Website: pnxmetals.com.au